



**Reliable
Refrigeration
Solutions**



HORIZONTAL BATCH FREEZER

Features



SNOWY 7 QUICK



- **CYLINDER**
 - Gas direct expansion inside the cylinder to optimize thermal efficiency between mix/gelato and cooling gas. Reduced batch freezing times.



- **STIRRER**
 - New highly efficient stirrer. Improved heat exchange between gelato mix and refrigerant gas thanks to the scraping function of suspension scrapers that reduces batch freezing process time.



- **SCRAPERS**
 - Highly efficient suspension scrapers capable of adapting to constant and progressive mix hardening during batch freezing process. The cylinder is therefore always clean and free from processing residues.



- **PUSH BUTTON PANEL & HOPPER**
 - Tactile push button panel, ergonomic and intuitive. Clear and simple icons for effective management of work cycles.
 - Large and capacious hopper for product loading without spurts or spillage.



- **OUTLET NOZZLE**
 - Height adjustable tub support to easily take gelato from a carapina ice-cream container or a standard tub of any dimensions.



- **ERGONOMIC**
 - The Quick series has been designed to be ergonomic and user-friendly compared to standard models, in particular:
 - The operator does not have to bend to pour the mix, take gelato, wash and clean the machine;
 - The display is bent towards the user to be visible from any directions. No reflection is produced on the display.

PRODUCT SPECIFICATIONS

Model	Dimensions (mm)	Weight	Power
SNOWY 7 QUICK	520(W)x860(D)x1338(H)	257KG	3 Phase / 400V (50Hz)

PRODUCTION SPECIFICATIONS

Per cycle (kg) Mix added (min – max)	Per cycle (L) Gelato produced (min – max)	Per hour (kg) Gelato produced (min – max)	Per hour (L) Gelato produced (min – max)
1.5KG – 7KG	2L – 9L	9KG – 42KG	12L – 54L





**Reliable
Refrigeration
Solutions**



PASTEURISERS & VATS

Features



- **TANK**
 - Single unit tank in stainless steel, smooth sides, sloped bottom towards the tap to speed the mix outgoing flow for an easy and fast sanitation inside the tank.



- **STIRRER**
 - Stirrer totally in stainless steel, removable and washable. Different stirring speeds make it possible to quickly disperse and solubilise solid ingredients in the mix. Standard delivered mix flow restraint system to avoid mix foam effect.



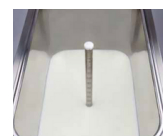
- **TAP**
 - Tap in stainless steel for mix derogation completely removable. Provided with mix rejection system to avoid mix residues inside the tap after derogation A dedicated push button operations the washing system to free the machine from derogation residues.



- **PUSH BUTTON PANEL**
 - Clear and Intuitive design for greater ease of use. Bent towards the user to be visible from any directions Total control of machine processing through keyboard. Numeric Led display to check and modify machine parameters in real time..



- **PROGRAMMES**
 - Very simply user interface for a fast and intuitive use. It provides for the possibility to modify temperature and time according to products in progress



- **ICE PREVENTION**
 - All Sweety models always keep the right mix consistency during cooling, even in case of reduced product quantity in the tank.



SWEETY 60 QUICK

PRODUCT SPECIFICATIONS

Model	Dimensions (mm)	Tank Capacity (min-max)	Weight	Power
SWEETY 60 QUICK	350(W)x950(D)x1030(H)	20L ~ 60L	186KG	3 Phase / 400V (50Hz)





**Reliable
Refrigeration
Solutions**



PASTEURISERS & VATS

Features



SWEETY 130 QUICK



- **TANK**
 - Single unit tank in stainless steel, smooth sides, sloped bottom towards the tap to speed the mix outgoing flow for an easy and fast sanitation inside the tank.



- **STIRRER**
 - Stirrer totally in stainless steel, removable and washable. Different stirring speeds make it possible to quickly disperse and solubilise solid ingredients in the mix. Standard delivered mix flow restraint system to avoid mix foam effect.



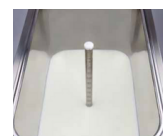
- **TAP**
 - Tap in stainless steel for mix derogation completely removable. Provided with mix rejection system to avoid mix residues inside the tap after derogation A dedicated push button operations the washing system to free the machine from derogation residues.



- **PUSH BUTTON PANEL**
 - Clear and Intuitive design for greater ease of use. Bent towards the user to be visible from any directions Total control of machine processing through keyboard. Numeric Led display to check and modify machine parameters in real time..



- **PROGRAMMES**
 - Very simply user interface for a fast and intuitive use. It provides for the possibility to modify temperature and time according to products in progress



- **ICE PREVENTION**
 - All Sweety models always keep the right mix consistency during cooling, even in case of reduced product quantity in the tank.

PRODUCT SPECIFICATIONS

Model	Dimensions (mm)	Tank Capacity (min-max)	Weight	Power
SWEETY 130 QUICK	520(W)x950(D)x1030(H)	40L ~ 125L	220KG	3 Phase / 400V (50Hz)

