



**Reliable
Refrigeration
Solutions**

aiwa

日本製
MADE IN JAPAN

Inverter Cakecase Display



Refrigerating compartment : 2°C to 10°C
Humidity: 80% average (90% or more at the peak)

Reduces the electricity cost by 59%, improved design.
The first inverter controlled showcase for 2400mm-width model.

● Easy to See

The area of the front glass is wider than the previous model, now it is easy for customers to see the items in the showcase. (R-model)

● Front-Bottom is Trimmed

The lower part of the front-side is trimmed, so it is easy for customers to get closer to the showcase.



● Glasses on the Sides

White gray colored glass used on the sides. Double Glazing used to prevent condensation.



● Flat Ceiling

The flat ceiling allows you to choose a panel that suits your shop.

● Mirrored Stainless Steel

Mirrored stainless used as frames to give luxurious feeling to the showcase.

● LED Lights as a Standard Feature

Two lanes of LED lights are also available as an option.



Improved Features Maintenance

Roll-slitler Installed at the Air Outlet

Easy to wipe to keep it clean. Roll-slitler installed on the back side of the air outlet.



Open / Close Fan Cover

The openable cabinet fan cover makes it easy to check and maintain.



Machine in a Drawer type machine

The machine unit is easily separated into cooling unit & control box for maintenance.



Hydrophilic, Anti-bacterial Tray Installed

You can pull out the tray at the lower part of evaporator to remove dust to keep it clean to protect bacteria from increasing.



The hydrophilic, anti-bacteria tray is easy to clean with water to prevent stains.



TCR803-EC



Inverter controlled compressor, condensation fan, showcase fan and DC power supply system installed for Defrost fan. LED lights used as standard feature for bulbs to last longer with less energy. High thermal insulation vacuum glass and airtight resin frame used for the sliding doors. With these materials, we are able to provide cost-efficient, silent high humidity showcase.

As of February 2013. Food Showcases in Japan (An internal investigation)

New Design

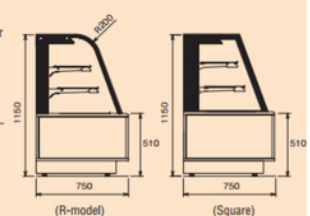
	MODEL	Power	Adjustable temperature range	OUTSIDE DIMENSIONS(mm)		
				Width	Depth	Height
R-model	TCR413-EC	POWER SUPPLY : 100V · 1φ AUXILIARY 100V · 1φ 50/60Hz	Refrigerating compartment: 2°C to 10°C Humidity: 80% average (90% or more at the peak)	1200	750	1150
	TCR513-EC			1500		
	TCR613-EC			1800		
	TCR803-EC			2400		
Square	TCK413-EC			1200	750	1150
	TCK513-EC			1500		
	TCK613-EC			1800		
	TCK803-EC			2400		

EXTERIOR

Top plate : designated color sheet or color glass
Front : high transparency glass
Frames : mirrored stainless
Waist level : pre-arranged color sheet or color glass

INTERIOR

Shelf plate : glass
Bottom plate : stainless hairline
Sliding door : high thermal insulation vacuum glass
Light : LED



**Reliable
Refrigeration
Solutions**



**Reliable
Refrigeration
Solutions**

daiwa

日本製
MADE IN JAPAN

Inverter Cakecase Features



Inverter controlled compressor, condensation fan, showcase fan and DC power supply system installed for Defrost fan. LED lights used as standard feature for bulbs to last longer with less energy. High thermal insulation vacuum glass and airtight resin frame used for the sliding doors. With these materials, we are able to provide cost-efficient, silent high humidity showcase.

As of February 2013. Food Showcases in Japan (An internal investigation)

New Design

Refrigerating compartment : 2°C to 10°C
Humidity: 80% average (90% or more at the peak)

Reduces the electricity cost by 59%, improved design.
The first inverter controlled showcase for 2400mm-width model.

● Easy to See

The area of the front glass is wider than the previous model, now it is easy for customers to see the items in the showcase. (R-model)

● Front-Bottom is Trimmed

The lower part of the front-side is trimmed, so it is easy for customers to get closer to the showcase.

● Glasses on the Sides

White gray colored glass used on the sides. Double Glazing used to prevent condensation.

● Flat Ceiling

The flat ceiling allows you to choose a panel that suits your shop.

● Mirrored Stainless Steel

Mirrored stainless steel used as frames to give luxurious feeling to the showcase.

● LED Lights as a Standard Feature

Two lanes of LED lights are also available as an option.



Improved Features Maintenance

Roll-slitler Installed at the Air Outlet

Easy to wipe to keep it clean. Roll-slitler installed on the back side of the air outlet.



Open / Close Fan Cover

The openable cabinet fan cover makes it easy to check and maintain.



Machine in a Drawer type machine

The machine unit is easily separated into cooling unit & control box for maintenance.



Hydrophilic, Anti-bacterial Tray Installed

You can pull out the tray at the lower part of evaporator to remove dust to keep it clean to protect bacteria from increasing.



The hydrophilic, anti-bacteria tray is easy to clean with water to prevent stains.

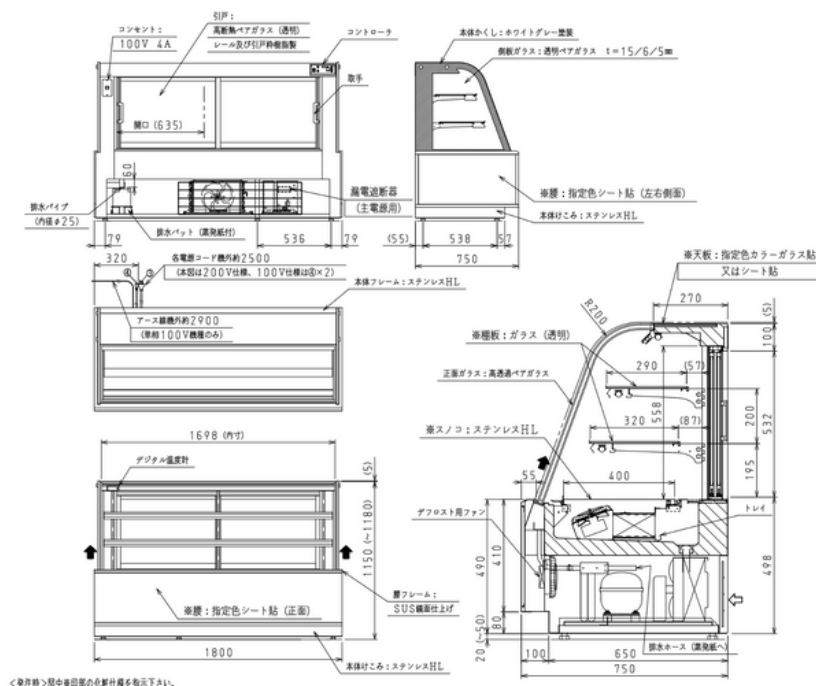


**Reliable
Refrigeration
Solutions**

Inverter Cakecase Display



Reduces the electricity cost by 59%, improved design.

**TCR613-EC**

PRODUCT SPECIFICATIONS

Model	Temperature	Dimensions (mm)	Volume (L)	Refrigerant	Power
TCR613-EC	+2°C ~ +10°C	Ext: 1800(W) x 750(D) x 1150(H) Int: 1698(W) x 400(D) x 558(H)	500L	R134A	220V / 3 Phase / (50Hz) / 20A/3PH isolator [Cooling] 460/460W [Motor] 58/58W [Heater] 460/460W Power Consumption 1070W



**Reliable
Refrigeration
Solutions**

daiwa

日本製
MADE IN JAPAN

Inverter Cakecase Features



New cakeshow case

TCR423/523/623-EC
TCK423/523/623-EC
TCR421/521/621-EC
TCK421/521/621-EC

Temperature display

Installed half mirror glass



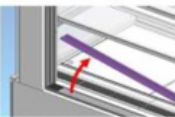
TRC type

Sliding door



Improved cleanability inside the cabinet

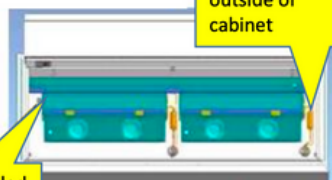
- Multi-layered and super-insulated glass (Covered with half-mirror film)
- The material of door frame and rails have changed to resin for improved insulation.
- Rails can be removed for full washing.



Options

2 lines LED and upper light are available

Wiring is pulled out from one location



Top view with front and side glass removed

Toning dimmable LED

- Installed LED with adjustable dimming and color control
- *LIGHT DIMMABLE RANGE : 20~100%
- *LIGHT TONING RANGE : 2700~5000K
- More closely resemble natural light of LED



5000K Neutral



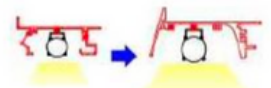
3500K Warm White



2700K Incandescent

Shape change of the LED holder

- LED light shine more brightly by improved shape.



Angle change of the front glass

- *Round shape : R200→R150
- *Square shape : 80°→72°



Defogger fan

- Installed defogger fan
- Removable front panel for easy replacement of defogger fan.

