

# Commercial Pillarless Design Food Service Refrigerators

**NEW**

## KB series

Premium Pillarless Stainless Steel Refrigerators  
with *Inverter Energy Saving* features and  
*Excellent Cooling Performance*





### <Pillar / Pillarless> Models available

- LB = Left Side Door Opening (2 Door Model)
- B = Pillar Model
- SB = Pillarless Model



LB = Left Side Door Opening  
(2 Door Model)



SRR-K661B  
SRR-K681B  
SRR-K761B  
SRR-K781B



SRR-K661LB  
SRR-K681LB  
SRR-K761LB  
SRR-K781LB



SRR-K961SB  
SRR-K961B (Pillar)  
SRR-K981SB  
SRR-K981B (Pillar)



SRR-K1261SB  
SRR-K1261B (Pillar)  
SRR-K1281SB  
SRR-K1261B (Pillar)  
SRR-K1283SB



SRR-K1561SB  
SRR-K1581SB  
SRR-K1581B  
SRR-K1583SB



SRR-K1561-3B



SRR-K1861B  
SRR-K1881B  
SRR-K1883B

# CHILLER

- 6°C ~ + 12°C

Model	Description
SRR-K661B SRR-K661LB	Size: 615(W) x 650(D) x 1950(H) Temperature: - 6°C ~ + 12°C Capacity: 393L
SRR-K681B SRR-K681LB	Size: 615(W) x 800(D) x 1950(H) Temperature: - 6°C ~ + 12°C Capacity: 505L
SRR-K761B SRR-K761LB	Size: 745(W) x 650(D) x 1950(H) Temperature: - 6°C ~ + 12°C Capacity: 490L
SRR-K781B SRR-K781LB	Size: 745(W) x 800(D) x 1950(H) Temperature: - 6°C ~ + 12°C Capacity: 636L
SRR-K961SB SRR-K961B	Size: 900(W) x 650(D) x 1950(H) Temperature: - 6°C ~ + 12°C Capacity: 661L
SRR-K981SB SRR-K981B	Size: 900(W) x 800(D) x 1950(H) Temperature: - 6°C ~ + 12°C Capacity: 803L
SRR-K1261SB SRR-K1261B	Size: 1200(W) x 650(D) x 1950(H) Temperature: - 6°C ~ + 12°C Capacity: 848L
SRR-K1281SB SRR-K1281B SRR-K1283SB	Size: 1200(W) x 800(D) x 1950(H) Temperature: - 6°C ~ + 12°C Capacity: 1087L

Model	Description
SRR-K1561SB	Size: 1460(W) x 650(D) x 1950(H) Temperature: - 6°C ~ + 12°C Capacity: 1042L
SRR-K1561-3B	Size: 1460(W) x 650(D) x 1950(H) Temperature: - 6°C ~ + 12°C Capacity: 1042L
SRR-K1581SB SRR-K1581B SRR-K1583SB	Size: 1460(W) x 800(D) x 1950(H) Temperature: - 6°C ~ + 12°C Capacity: 1343L
SRR-K1861B	Size: 1785(W) x 650(D) x 1950(H) Temperature: - 6°C ~ + 12°C Capacity: 1292L
SRR-K1881B SRR-K1883B	Size: 1785(W) x 800(D) x 1950(H) Temperature: - 6°C ~ + 12°C Capacity: 1659L



### <Pillar / Pillarless> Models available

- LB = Left Side Door Opening (2 Door Model)
- B = Pillar Model
- SB = Pillarless Model



LB = Left Side Door Opening  
(2 Door Model)



SRF-K661B  
SRF-K681B  
SRF-K683B  
SRF-K761B  
SRF-K781B  
SRF-783B



SRF-K661LB  
SRF-K681LB  
SRF-K683LB  
SRF-K761LB  
SRF-781LB  
SRF-783LB



SRF-K961SB  
SRF-K961B (Pillar)  
SRF-K963SB  
SRF-K981SB  
SRF-K981B (Pillar)  
SRF-K983SB



SRF-K1261SB  
SRF-K1261B  
SRF-K1263SB  
SRF-K1263B  
SRF-K1281SB  
SRF-K1281B  
SRF-K1283SB  
SRF-K1283B



SRF-K1563SB  
SRF-K1583SB  
SRF-K1583B



SRF-K1563-3B



SRF-K1863B  
SRF-K1883B

# FREEZER

## - 20°C and Below

Model	Description
SRF-K661B SRF-K661LB	Size: 615(W) x 650(D) x 1950(H) Temperature: - 20°C and Below Capacity: 393L
SRF-K681B SRF-K681LB SRF-K683B SRF-K683LB	Size: 615(W) x 800(D) x 1950(H) Temperature: - 20°C and Below Capacity: 505L
SRF-K761B SRF-K761LB	Size: 745(W) x 650(D) x 1950(H) Temperature: - 20°C and Below Capacity: 490L
SRF-K781B SRF-781LB SRF-783B SRF-783LB	Size: 745(W) x 800(D) x 1950(H) Temperature: - 20°C and Below Capacity: 636L
SRF-K961SB SRF-K961B SRF-K963SB	Size: 900(W) x 650(D) x 1950(H) Temperature: - 20°C and Below Capacity: 605L
SRF-K981SB SRF-K981B SRF-K983SB	Size: 900(W) x 800(D) x 1950(H) Temperature: - 20°C and Below Capacity: 797L
SRF-K1261SB SRF-K1261B SRF-K1263SB SRF-K1263B	Size: 1200(W) x 650(D) x 1950(H) Temperature: - 20°C and Below Capacity: 842L
SRF-K1281SB SRF-K1281B SRF-K1283SB SRF-K1283B	Size: 1200(W) x 800(D) x 1950(H) Temperature: - 20°C and Below Capacity: 1081L

Model	Description
SRF-K1563SB	Size: 1460(W) x 650(D) x 1950(H) Temperature: - 20°C and Below Capacity: 1042L
SRF-K1563-3B	Size: 1460(W) x 650(D) x 1950(H) Temperature: - 20°C and Below Capacity: 1042L
SRF-K1583SB SRF-K1583B	Size: 1460(W) x 800(D) x 1950(H) Temperature: - 20°C and Below Capacity: 1343L
SRF-K1863B	Size: 1785(W) x 650(D) x 1950(H) Temperature: - 20°C and Below Capacity: 1292L
SRF-K1883B	Size: 1785(W) x 800(D) x 1950(H) Temperature: - 20°C and Below Capacity: 1659L

### <Pillar / Pillarless> Models available

- LB = Left Side Door Opening (2 Door Model)
- B = Pillar Model
- SB = Pillarless Model



SUF-K961B  
SUF-K971B

SUR-K1261SB | SUF-K1261SB  
SUR-K1271SB | SUF-K1271SB  
SUR-K1561SB | SUF-K1561SB  
SUR-K1571SB | SUF-K1571SB

SUR-K1261SB-R | SUF-K1261SB-R  
SUR-K1271SB-R | SUF-K1271SB-R  
SUR-K1561SB-R | SUF-K1561SB-R  
SUR-K1571SB-R | SUF-K1571SB-R

SUR-K1261B | SUF-K1261B  
SUR-K1271B | SUF-K1271B  
SUR-K1561B | SUF-K1561B  
SUR-K1571B | SUF-K1571B

SUR-K1861SB | SUF-K1861SB  
SUR-K1871SB | SUF-K1871SB  
SUR-K2161SB  
SUR-K2171SB

SUR-K1861SB-R | SUF-K1861SB-R  
SUR-K1871SB-R | SUF-K1871SB-R  
SUR-K2161SB-R  
SUR-K2171SB-R

## CHILLER

- 6°C ~ + 12°C

## FREEZER

- 20°C and Below

Model	Description
SUR-K1261SB SUR-K1261SB-R SUR-K1261B	Size: 1200(W) x 600(D) x 800(H) Temperature: - 6°C ~ + 12°C Capacity: 240L
SUR-K1271SB SUR-K1271SB-R SUR-K1271B	Size: 1200(W) x 750(D) x 800(H) Temperature: - 6°C ~ + 12°C Capacity: 316L
SUR-K1561SB SUR-K1561SB-R SUR-K1561B	Size: 1500(W) x 600(D) x 800(H) Temperature: - 6°C ~ + 12°C Capacity: 328L
SUR-K1571SB SUR-K1571SB-R SUR-K1571B	Size: 1500(W) x 750(D) x 800(H) Temperature: - 6°C ~ + 12°C Capacity: 432L
SUR-K1861SB SUR-K1861SB-R	Size: 1800(W) x 600(D) x 800(H) Temperature: - 6°C ~ + 12°C Capacity: 415L
SUR-K1871SB SUR-K1871SB-R	Size: 1800(W) x 750(D) x 800(H) Temperature: - 6°C ~ + 12°C Capacity: 546L
SUR-K2161SB SUR-K2161SB-R	Size: 2100(W) x 600(D) x 800(H) Temperature: - 20°C and Below Capacity: 503L
SUR-K2171SB SUR-K2171SB-R	Size: 2100(W) x 750(D) x 800(H) Temperature: - 20°C and Below Capacity: 662L

Model	Description
SUF-K961B	Size: 890(W) x 600(D) x 800(H) Temperature: - 20°C and Below Capacity: 156L
SUF-K971B	Size: 890(W) x 750(D) x 800(H) Temperature: - 20°C and Below Capacity: 205L
SUF-K1261SB SUF-K1261SB-R SUF-K1261B	Size: 1200(W) x 600(D) x 800(H) Temperature: - 20°C and Below Capacity: 240L
SUF-K1271SB SUF-K1271SB-R SUF-K1271B	Size: 1200(W) x 750(D) x 800(H) Temperature: - 20°C and Below Capacity: 316L
SUF-K1561SB SUF-K1561SB-R SUF-K1561B	Size: 1500(W) x 600(D) x 800(H) Temperature: - 20°C and Below Capacity: 328L
SUF-K1571SB SUF-K1571SB-R SUF-K1571B	Size: 1500(W) x 750(D) x 800(H) Temperature: - 20°C and Below Capacity: 432L
SUF-K1861SB SUF-K1861SB-R	Size: 1800(W) x 600(D) x 800(H) Temperature: - 20°C and Below Capacity: 415L
SUF-K1871SB SUF-K1871SB-R	Size: 1800(W) x 750(D) x 800(H) Temperature: - 20°C and Below Capacity: 546L





SUR-K1261CB | SUR-K1271CB  
SUR-K1561CB | SUR-K1571CB



SUR-K1261CB-R | SUR-K1271CB-R  
SUR-K1561CB-R | SUR-K1571CB-R



SUR-K1861CSB | SUR-K1871CSB



SUR-K1861CSB-R | SUR-K1871CSB-R

## DUAL TEMPERATURE

- 6°C ~ + 8°C / -20°C

Model	Description
SUR-K1261CB SUR-K1261CB-R	Size: 1200(W) x 600(D) x 800(H) Temperature: - 6°C ~ + 8°C / -20°C Capacity: 214L (F = 104L   C = 110L)
SUR-K1271CB SUR-K1271CB-R	Size: 1200(W) x 750(D) x 800(H) Temperature: - 6°C ~ + 8°C / -20°C Capacity: 282L (F = 142L   C = 140L)
SUR-K1561CB SUR-K1561CB-R	Size: 1500(W) x 600(D) x 800(H) Temperature: - 6°C ~ + 8°C / -20°C Capacity: 300L (F = 146L   C = 154L)
SUR-K1571CB SUR-K1571CB-R	Size: 1500(W) x 750(D) x 800(H) Temperature: - 6°C ~ + 8°C / -20°C Capacity: 397L (F = 199L   C = 198L)
SUR-K1861CSB SUR-K1861CSB-R	Size: 1800(W) x 600(D) x 800(H) Temperature: - 6°C ~ + 8°C / -20°C Capacity: 387L (F = 122L   C = 265L)
SUR-K1871CSB SUR-K1871CSB-R	Size: 1800(W) x 750(D) x 800(H) Temperature: - 6°C ~ + 8°C / -20°C Capacity: 511L (F = 161L   C = 350L)



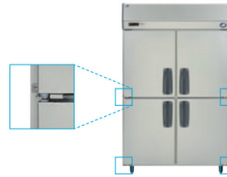
# KB series

## FEATURES



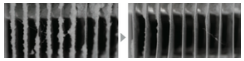
### Magnetic soft packing structure

- The soft structure adheres perfectly when the door is closed to prevent cold air leakage. The adhesion surface has an integrated structure, making it easy to wipe off dirt.



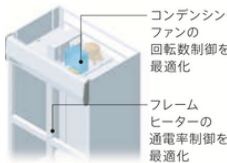
### Improved auto-close function

- Since it has become a magnetic packing pillarless, auto-close hinges are adopted on both sides. The auto-close function works.



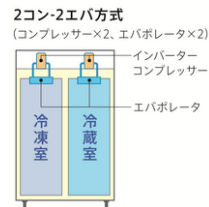
### Dust-proof condensers

- With dust adhesion prevention performance, it contributes to reducing the number of maintenance and maintaining energy savings.



### A new control program is installed in the cooling unit.

- The KB series is equipped with an inverter compressor that can finely control the operating frequency according to the temperature change in the cabinet compared to a constant speed compressor. In addition, the compressor is optimized, making it more energy-saving than a constant-speed compressor.
- Control the components with a new control program. Pursuing energy-saving performance in every detail.



### A dedicated unit with an inverter compressor is used for the refrigerator.

- Depending on the type of refrigerator, in addition to the conventional compressor to the refrigeration and refrigeration control unit, we equipped with two units of "refrigerated inverter unit" to save energy.



### Save electricity smartly

- According to the installation environment of the refrigerator and the situation of the store, the refrigerator will carry out the power-saving modes according to the environment by controlling the rotation speed of the condensing fan motor and the frequency of the compressor.



### Monitoring System

- By connecting to the remote data service "S-cubo", it supports automatic temperature recording, error alarm in the event of abnormality, monitoring of equipment operation status, etc.



### Door Reversible Side

- By making the upper and lower door size the same size, it is now possible to reverse the door on site. We can respond flexibly to sudden layout changes, business type changes, and work process changes.



# KB series

## FEATURES



### Separable cooling unit

- The cooling unit is removable. You can easily carry in and install it in a place with a narrow entrance by removing the cooling unit.



### Door surface material that is hard to get dirty

- The door surface material is made of clear-coated stainless steel, which is hard to get dirty.



### Improve storage efficiency with different left and right shelves. [Options]

- It is possible to set the left and right separate shelf positions that could not be realized with the center pillarless machine.
- This greatly increases the freedom of storage according to changes in business types and food forms, makes it easier to organize subdivided ingredients, and improves cooling efficiency.

※Compatible with refrigerated and frozen storage.

\*Only W=900mm and 1200mm are supported.

※The load capacity of the difference shelf is 10 kg.



### Grill structure of the new mechanism

- The front panel of the grill is swing-up. In addition, the structure of the stopper can be changed and the grill can be kept open, making it easy to work during maintenance.



### Simple and easy to grip handle design

- Adopting an ergonomic handle shape. The handle of the lower door is also easy to grip from the top, it is easy to operate, and the handle part is easy to clean because it is hard to accumulate dust.



### Auto-close function up

- By adopting a new auto-closed hinge, the lift mechanism that works when closing prevents you from forgetting to close the door and protects the temperature of the preserved ingredients. In addition, the open lock mechanism keeps the open state when the door is fully opened.



### Easy-to-clean condensor filter

- The removable filter is attached to the condenser to guard against the dust. Daily cleaning is also easy.



### Drainage trap with high insect and deodorizing effect

- It uses a drainage trap to prevent insects from entering and odors, so you can easily remove garbage.

# REDUCE ELECTRICITY BILL!

## INVERTER Energy Saving Performance

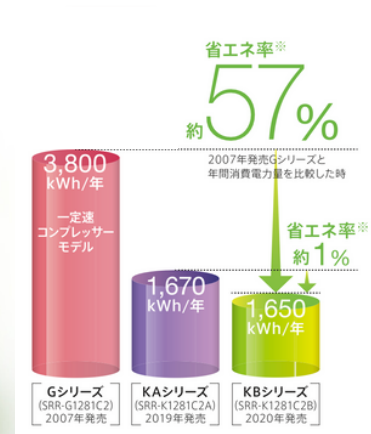
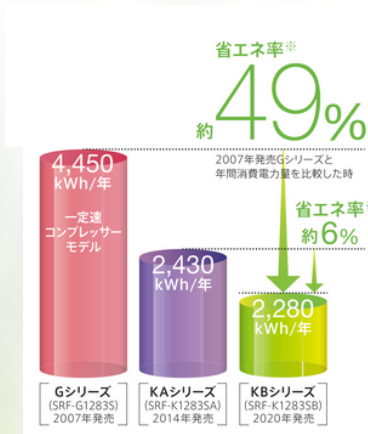
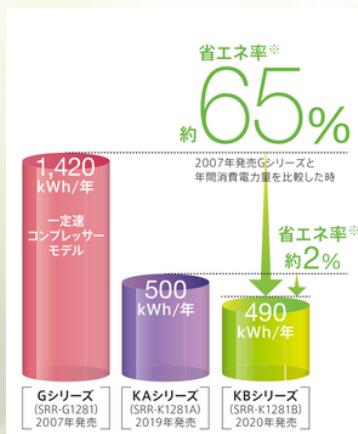
Chiller



Freezer



Dual Temperature



## Energy Saving up to **65%** Annually!

We are further enhancing energy savings for KB series cooling units by altering the cooling circuit to improve energy-saving performance, assessing heater capacity for pillarless machines, and optimizing inverter management!