



**Reliable
Refrigeration
Solutions**



Combi Speed Oven

Features

- Combi Mode
- Microwave
- Steam

SPEED-X™ Digital.ID™

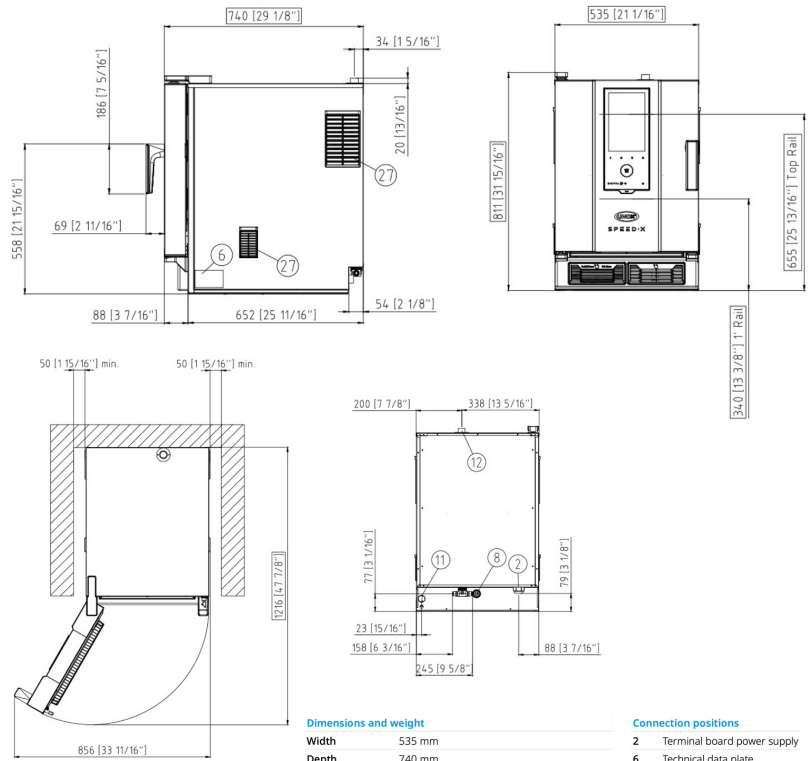
<Electric Combi Oven 5GN 2/3>

- Combi Mode
- Combi Speed Mode (With Microwave)
- Hyper Speed Mode (With Microwave)
- First Self Washing Speed Oven
- Adaptive Cooking
- 4 items simultaneously in speed mode
- Digital ID Mode



XEPA-0523-EXRN

SPEED-X™ is the first ever self-washing combi speed oven: the perfect combination of quality and speed. Unimaginable performance, no compromises.



*Water Outlet Connection is required

PRODUCT SPECIFICATIONS

Model	Temperature	Dimensions (mm)	Capacity	Weight	Power
XEPA-0523-EXRN	30 °C - 260 °C	535(W) x 740(D) x 811(H)	5 trays GN 2/3 70mm distance between trays 10 trays GN 2/3 35mm distance between trays	107KG	380-415 V/3N ph/50Hz 9kW / 14.7A / 20A Isolator
MANUAL COOKING		AUTOMATIC COOKING		Features	
<ul style="list-style-type: none"> • Cooking steps: up to 9 • Temperature: 30 °C - 260 °C • Preheating: up to 260 °C • Microwave: setting the percentage of microwaves in increments of 10% • CLIMA.Control: humidity setting from 10% to 100% and continuous measurement of the actual humidity present in the cooking chamber • Fan speed: 5 continuous speeds and 5 pulsed speeds • Storable programs: 1000+ 		<ul style="list-style-type: none"> • CHEFUNOX & SPEEDUNOX: choose something to cook from the built-in combi or combi-speed library, the oven automatically sets all the parameters • MULTI.Time: manages and monitor up to 10 cooking processes at the same time • MULTI.Speed: manages and monitors up to 4 speed cooking processes at the same time 		<ul style="list-style-type: none"> • 316 Stainless Steel • ROTOR.Klean™: automatic washing system • Integrated DET & Rinse™ detergent container • RO.Care: integrated filtering system • Digital.ID™ Operating System • Built-in microphone • Built-in Wifi Internet Connection 	

